



Project Erebus Floating Offshore Wind Farm

Notice to Mariners

NtM Number	Erebus/002 v001 Nearshore Geotech
Date of Issue	27/03/2023

1 Planned Activity

A geotechnical survey is due to be undertaken in West Angle Bay for investigations to inform the Erebus Floating Offshore Wind Farm (FLOW) project.

Operations will include sampling two boreholes, involving the use of Geobor S rotary drilling on a support jack up barge to collect the geotechnical samples. The jack up barge will be towed to site by a support vessel, the *Willendeavour*.

This survey will take place for a duration of between 7-14 days, with works estimated to start from the 11th of April.

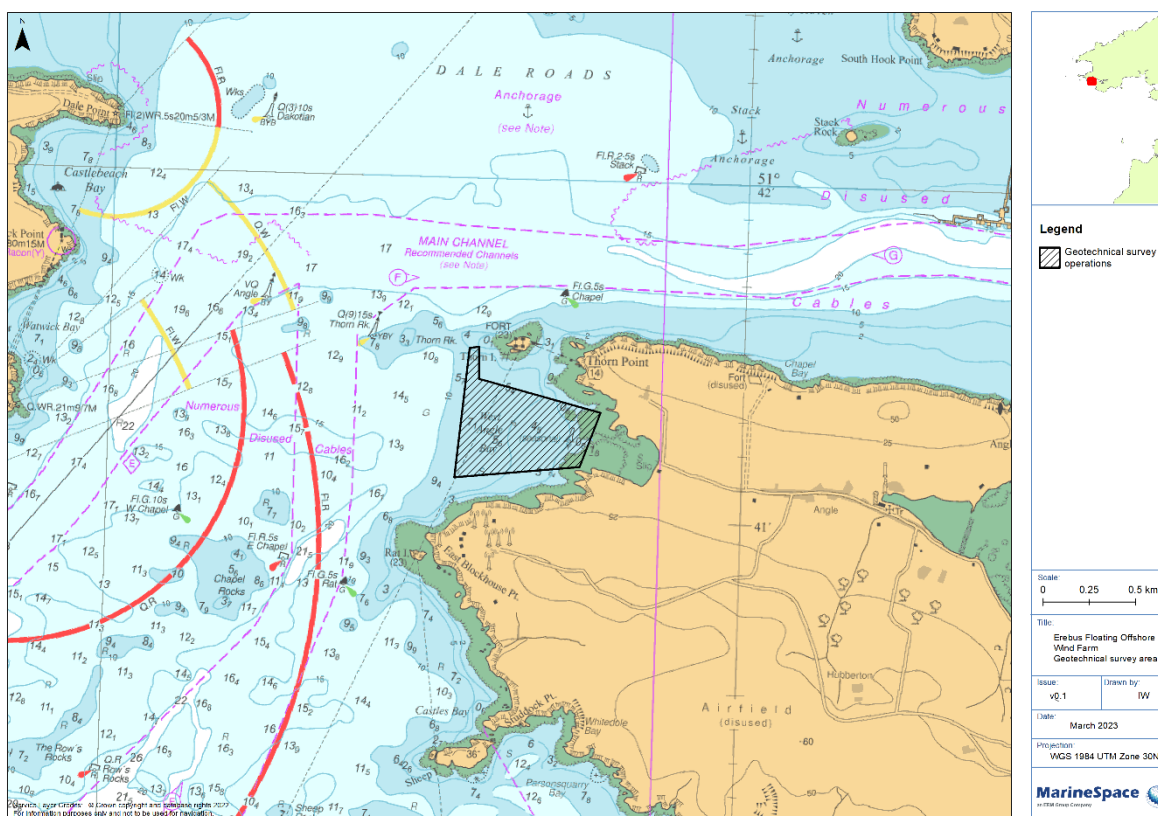
The geotechnical area will be within West Angle Bay, as indicated by the red polygon in the figure in Section 2. Coordinates of the area are also provided in Section 2.

The work will be undertaken by the Aran 120 jack up barge, supported by the *Willendeavour* and operated by Williams Shipping, please see details in Section 5.

2 Chart of survey area and geographic co-ordinates

All positions quoted in WGS84: latitude /longitude, in degrees, minutes & seconds.

Chart of Survey Area



Survey Location Geographic Coordinates

Degrees Minutes Seconds	51°41'6.8424" N	005°7'21.0252 W
	51°41'9.2580" N	005°6'45.6228 W

Document title	Date	Author	Reviewed By	Status	Page 1 of 2
Blue Gem Wind NtM Erebus/002 v001	27-03-2023	ERM	BGW	Final	





	51°41'18.9204" N	005°6'40.0464 W
	51°41'24.0828" N	005°7'13.3176 W
	51°41'24.2664" N	005°7'14.7648 W
	51°41'29.9472" N	005°7'15.0312 W

3 Safe clearances, navigation safety features and safety notes for mariners

Vessels are requested to maintain a safe distance (500m) from **Willendeavour** and the jack up barge **Aran 120**

All vessels are required to comply with the COLREGS, especially rules 16 and 18 as the **Willendeavour** and the jack up barge **Aran 120** will be restricted in their ability to manoeuvre.

4 Outline programme of works

The geotechnical survey is estimated to take place between 11th – 24th April 2023

Duration of geotechnical survey: 7-14 days

5 Vessel details and Jack up barge

Towing vessel

Vessel Name:	Willendeavour
Vessel Function:	Survey Vessel
VHF Call Sign:	MPCC
MMSI:	235051664
Vessel Operator Email:	marine@williams-shipping.co.uk



Jack up barge

Jack up barge Name:	ARAN 120
Length	18.3m
Number of legs	4



6 Project Contact Details

Fisheries Liaison Officer: Richard Joseph
 Telephone: 07944 891839
 Email: richard.joseph@marinespace.co.uk

Fisheries Liaison Officer: Rhianna Roberts
 Telephone: 07375 243358
 Email: rhianna.roberts@marinespace.co.uk