

# Update: Erebus Geotechnical Survey

## Notice to Mariners

<b>NtM Number</b>	<b>Erebus/002 v002 Offshore Geotechnical</b>
<b>Date of Issue</b>	<b>19.04.2023</b>

### 1 Planned Activity

Due to weather delays the geotechnical survey involving *Willendeavour* and *Aran 120* at West Angle Bay initially scheduled for between 11<sup>th</sup> April to 24<sup>th</sup> April 2023 will now take place between the 20<sup>th</sup> April and the 11<sup>th</sup> May. Surveying is expected to last for a duration of between 7-14 days. This NtM supersedes the NtM issued on the 27<sup>th</sup> March 2023 (reference: Erebus/002 v001 Nearshore Geotech).

An extension to this survey is due to be undertaken on the export cable and array area, commencing on the 19<sup>th</sup> April 2023. The work will be undertaken by the vessels *Voe Vanguard* and *Fugro Scout* operated by the survey contractor - Fugro. Vessel details are provided below.

These additional surveys are anticipated to occur in two phases; the first phase lasting for an approximate duration of between 10-14 days with the *Voe Vanguard* undertaking works estimated to start from the 19<sup>th</sup> of April 2023. The second phase will utilise the vessel *Fugro Scout*, with works expected to start on the 29<sup>th</sup> of April 2023. These timings are weather dependent and may be subject to change.

During the survey campaign, vessels will be deploying underwater Cone Penetration Test / Vibrocore equipment / rotary borehole drilling. During these times the vessels will have restricted ability to manoeuvre and therefore all other vessels are requested to fully comply with COLREGS obligations in respect of this.

**For the extent of the planned geotechnical survey a wider working area (500m radius from the sample location) is expected to account for vessel movement/location/turning radius etc.**

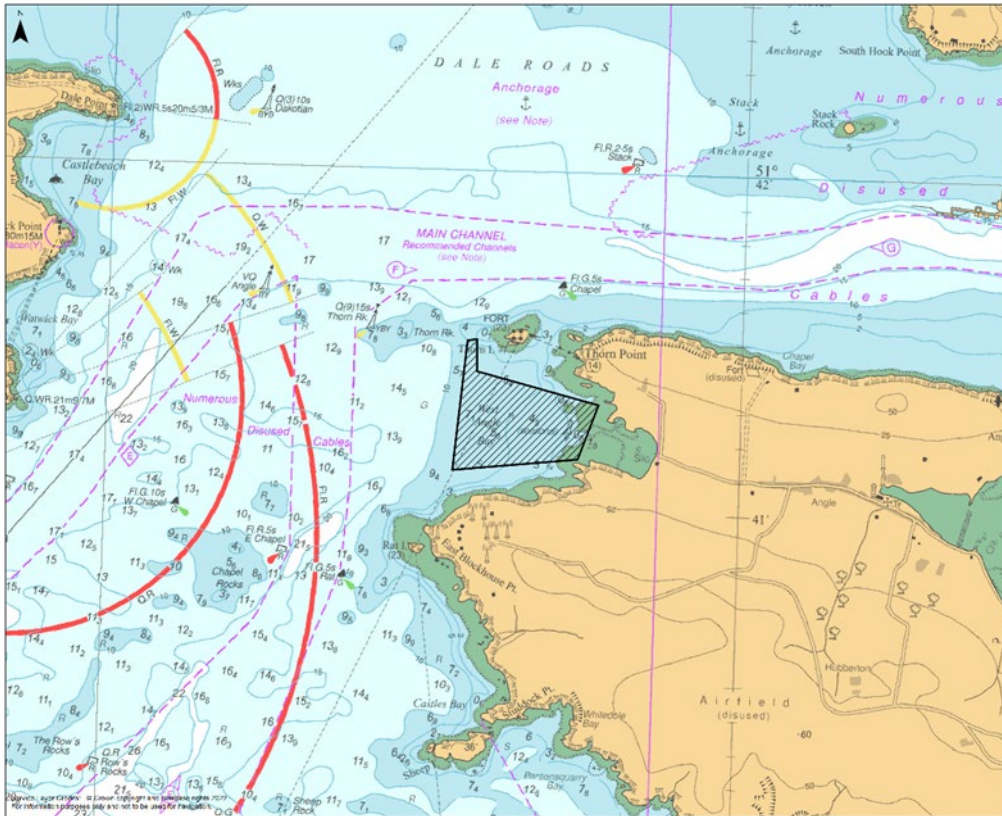
The survey will cover the main offshore array areas and cable corridor. The extent of the planned survey is shown in the attached figure. Coordinates of the offshore array and cable corridor are also provided below.

### 2 Outline Programme of Works (approximate)

<i>Willendeavour</i> and <i>Aran 120</i>	Earliest Start Date: 20/04/2023	Estimated Completion Date: 11/05/2023
<i>Voe Vanguard</i>	Earliest Start Date: 19/04/2023	Estimated Completion Date: 10/05/2023
<i>Fugro Scout</i>	Earliest Start Date: 29/04/2023	Estimated Completion Date: 20/05/2023

**These dates are subject to weather and operational uncertainties that could extend the overall duration, with the potential for further extension to the work duration.**

### 3 Chart of Activity Area, West Angle Bay



**Legend**  
 [Hatched Box] Geotechnical survey operations

**Scale:** 0 0.25 0.5 km

**Title:** Erebus Floating Offshore Wind Farm Geotechnical survey area

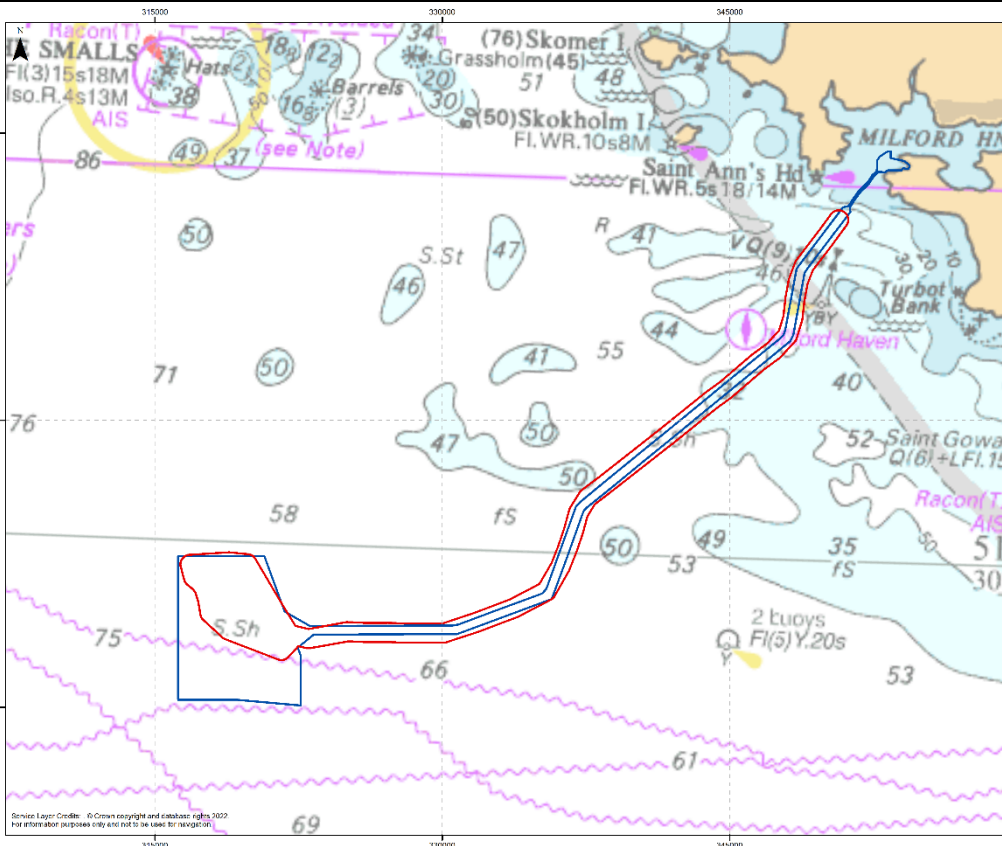
**Issue:** v0.1 **Drawn by:** IW

**Under:** March 2023

**Projection:** WGS 1984 UTM Zone 30N

**MarineSpace**  
 an IBM Group Company

### 4 Chart of Activity Area, Offshore Cable Corridor and Array Area



**Legend**  
 [Red Box] Survey Working Area  
 [Blue Line] Offshore Consent Boundary

**Scale:** 0 2.5 5 km

**Title:** Voe Vanguard and Fugro Scout Scope of Work

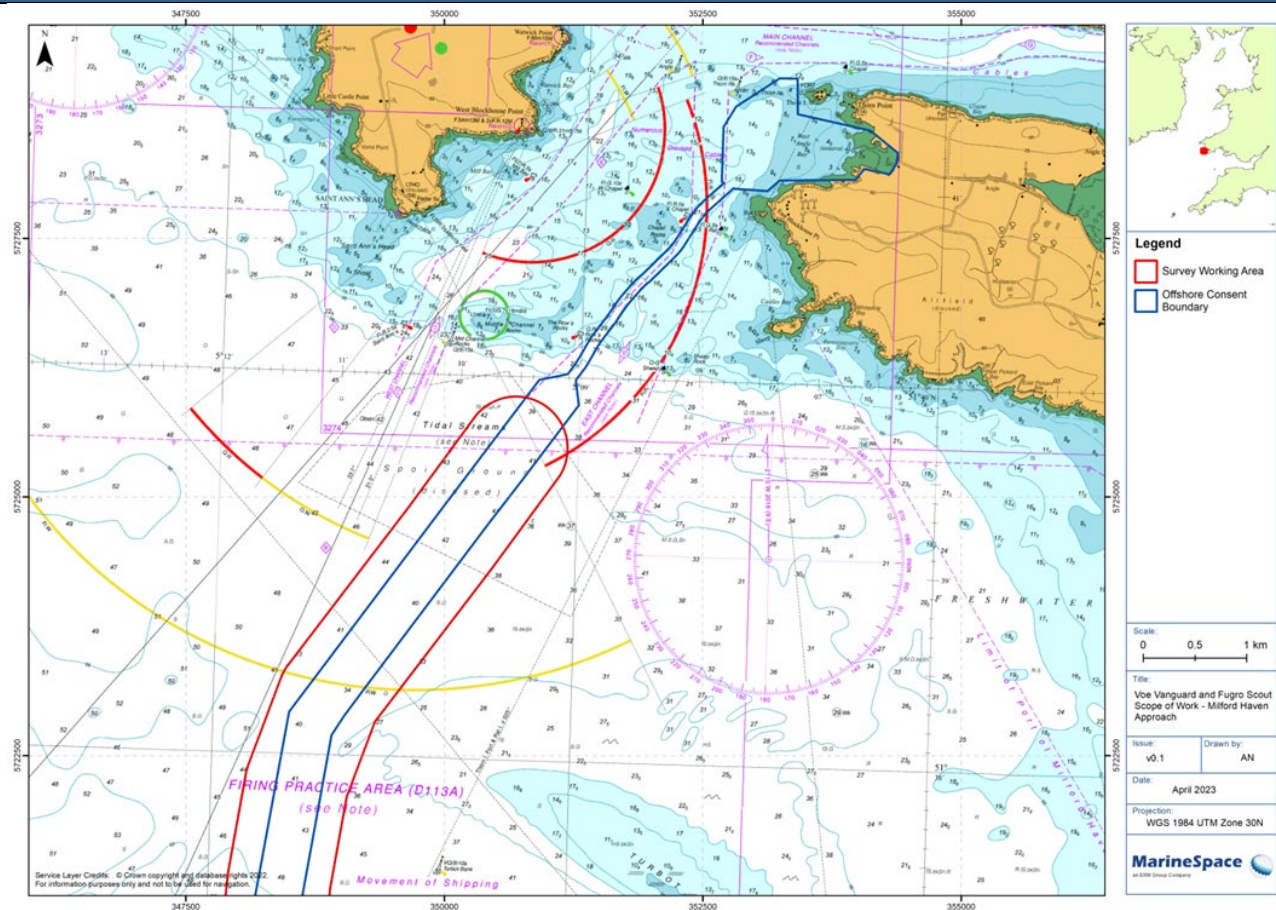
**Issue:** v0.1 **Drawn by:** AN

**Date:** April 2023

**Projection:** WGS 1984 UTM Zone 30N

**MarineSpace**  
 an IBM Group Company

## 5 Chart of Activity Area, Offshore Cable Corridor and Array Area



## 6 Safe Clearances, Navigation Safety Features and Safety Notes for Mariners

All vessels are requested to maintain a safe distance (100m) from the survey vessel when it is located within Milford Haven Port Authority (MHPA) limits, outside MHPA limits all vessels are requested to maintain a safe distance (500m) from the survey vessel.

All vessels are required to comply with the COLREGS, especially rules 16 and 18 as vessels involved in works will be restricted in their ability to manoeuvre.

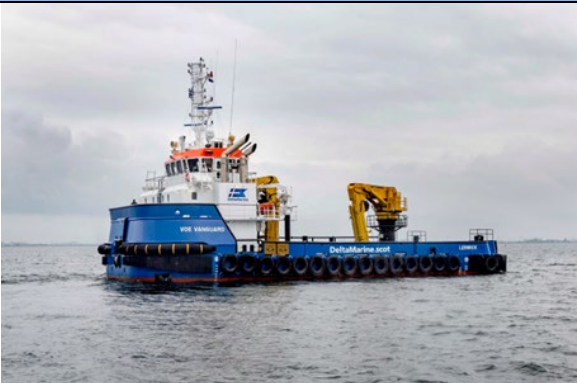
## 7 Vessel Details


<b>Vessel Name:</b>	<i>Willendeavour</i>
<b>Vessel Type / LOA(m):</b>	Survey Vessel
<b>VHF Call Sign:</b>	MPCC
<b>MMSI:</b>	235051664
<b>Onshore Contact:</b>	<a href="mailto:marine@williams-shipping.co.uk">marine@williams-shipping.co.uk</a>



<b>Vessel Name:</b>	<i>ARAN 120</i>
<b>Vessel Type / LOA(m):</b>	Jack up Barge / 18.3m
<b>IMO Number:</b>	n/a
<b>VHF Call Sign:</b>	n/a

MMSI:	n/a	
-------	-----	--

<b>Vessel Name:</b>	<b>Voe Vanguard</b>	
<b>Vessel Type / LOA(m):</b>	33.18m	
<b>IMO Number:</b>	9809693	
<b>VHF Call Sign:</b>	MBEN9	
<b>MMSI:</b>	232008636	

Drilling Vessel		
<b>Vessel Name:</b>	<b>Fugro Scout</b>	
<b>Vessel Type / LOA(m):</b>	82.9m	
<b>IMO Number:</b>	9600372	
<b>VHF Call Sign:</b>	9V3887	
<b>MMSI:</b>	566948000	

8 Fisheries Liaison Officers	
Richard Joseph Telephone: 07944 891839 Email: <a href="mailto:richard.joseph@marinespace.co.uk">richard.joseph@marinespace.co.uk</a>	
Rhianna Roberts Telephone: 07375 243358 Email: <a href="mailto:rhianna.roberts@marinespace.co.uk">rhianna.roberts@marinespace.co.uk</a>	

**9 Geographic co-ordinates of activity area**  
All positions quoted in WGS84 UTM Zone 30N and in degrees and decimal minutes

Please note: The coordinates presented below represent the Survey Works area, allowing 500m in each direction from sampling locations to accommodate vessel movements.

Area	Degrees Decimal Minutes	
	Latitude	Longitude
West Angle Bay	51° 41.1140 N	005° 7.3504 W
	51° 41.1543 N	005° 6.7604 W
	51° 41.3153 N	005° 6.6674 W
	51° 41.4014 N	005° 7.222 W
	51° 41.4044 N	005° 7.2461 W
	51° 41.4991 N	005° 7.2505 W

	51° 41.495 N	005° 07.295 W
<b>Cable Corridor and Array Area</b>	51° 27.9359 N	005° 24.3227 W
	51° 27.3660N	005° 26.7156 W
	51° 27.3120 N	005° 31.0499 W
	51° 27.0780 N	005° 32.8157 W
	51° 27.1259 N	005° 33.3138 W
	51° 26.7780 N	005° 33.7907 W
	51° 26.7240 N	005° 34.1261 W
	51° 27.2698 N	005° 36.6707 W
	51° 27.7738 N	005° 37.6278 W
	51° 27.8881N	005° 37.7501 W
	51° 28.5360 N	005° 38.0274 W
	51° 28.8240 N	005° 38.5134 W
	51° 29.3399 N	005° 38.7425 W
	51° 29.5019 N	005° 38.6303 W
	51° 29.5859N	005° 38.3712 W
	51° 29.6999 N	005° 36.5814 W
	51° 29.6399 N	005° 35.5512 W
	51° 27.6960 N	005° 33.4590 W
	51° 27.6239 N	005° 32.8746 W
	51° 27.8519 N	005° 31.1220 W
	51° 27.9000N	005° 26.8601 W
	51° 28.6379 N	005° 23.8613 W
	51° 29.1059 N	005° 22.5329 W
	51° 29.7180 N	005° 22.0109 W
	51° 31.2540 N	005° 21.2741 W
	51° 31.7520 N	005° 20.8242 W
	51° 36.0779 N	005° 12.5988 W
	51° 36.4560 N	005° 12.0701 W
	51° 36.8760N	005° 11.8920 W
	51° 37.9019 N	005° 11.7006 W
	51° 38.4358 N	005° 11.4018 W
	51° 39.8220 N	005° 9.8165 W
	51° 39.8879N	005° 9.4482 W
	51° 39.7439 N	005° 9.1349 W
	51° 39.4800 N	005° 9.1524 W
	51° 38.1779 N	005° 10.6373 W
	51° 37.7819 N	005° 10.8546 W
	51° 36.7680 N	005° 11.0406 W
	51° 36.1619 N	005° 11.3400 W
	51° 35.6819 N	005° 12.0077 W
51° 34.5419 N	005° 14.11800 W	
51° 31.4039 N	005° 20.1509 W	
51° 31.0560 N	005° 20.4677 W	
51° 29.5079 N	005° 21.2141W	
51° 28.7400 N	005° 21.8682 W	
51° 28.1579 N	005° 23.4720 W	
51° 27.9359 N	005° 24.3227 W	