



Project Valorous Floating Offshore Wind Farm

Notice to Mariners

NtM Number	Valorous/001 v7.0
Date of Issue	16/12/2021

1 Planned Activity

Recovery of the Floating LiDAR

Retrieval of Floating LiDAR System

The Floating LiDAR System, located within the proposed Valorous Floating Offshore Wind Farm (FLOW) project site, has been located at its original deployment location provided below:

- 51°20.659' N, 005°40.694' W

The Floating LiDAR System has capsized but it is still connected to the mooring system and remains in place at the location above.

Preparations are being made to recover the floating LiDAR, this operation will take place as soon as possible and when it is safe to do so. **The current expectation is that recovery is expected the week commencing the 20 December 2021.** The Vessel details for the recovery operation are currently unknown at this time due to the preparations currently being planned.

There are currently 2 scenarios for the recovery operation. Which scenario is undertaken is based on the weather/sea conditions at the time of operation:

Plan A: The floating LiDAR, including full mooring and clump weight, will be brought on board the vessel to sail to harbour (Milford).

Plan B The floating LiDAR will be towed to harbour (Milford). The full mooring and clump weight would be fully recovered.

Details of the device and relevant Aids to Navigation are provided below for information however please note that the communication system is still down and that the device is currently capsized.



Floating LiDAR

Yellow in colour

Yellow 'X' shaped topmark

Fl (5) Y 20s light (5nm range)

Flash rate not exceeding 30 per minute.

MMSI Number: 992351335

2 Geographic Co-ordinates (UTM 30 / WGS 84)

Confirmed position of the Floating LiDAR Location

Degrees Decimal Minutes	51°20.659' N	005°40.694' W
Degrees Minutes Seconds	51°20'39.57" N	005°40'41.69" W

Document title	Date	Author	Reviewed By	Status	Page 1 of 2
Blue Gem Wind NtM/001 v7.0	16-12-2021	BGW	OWC	FINAL	

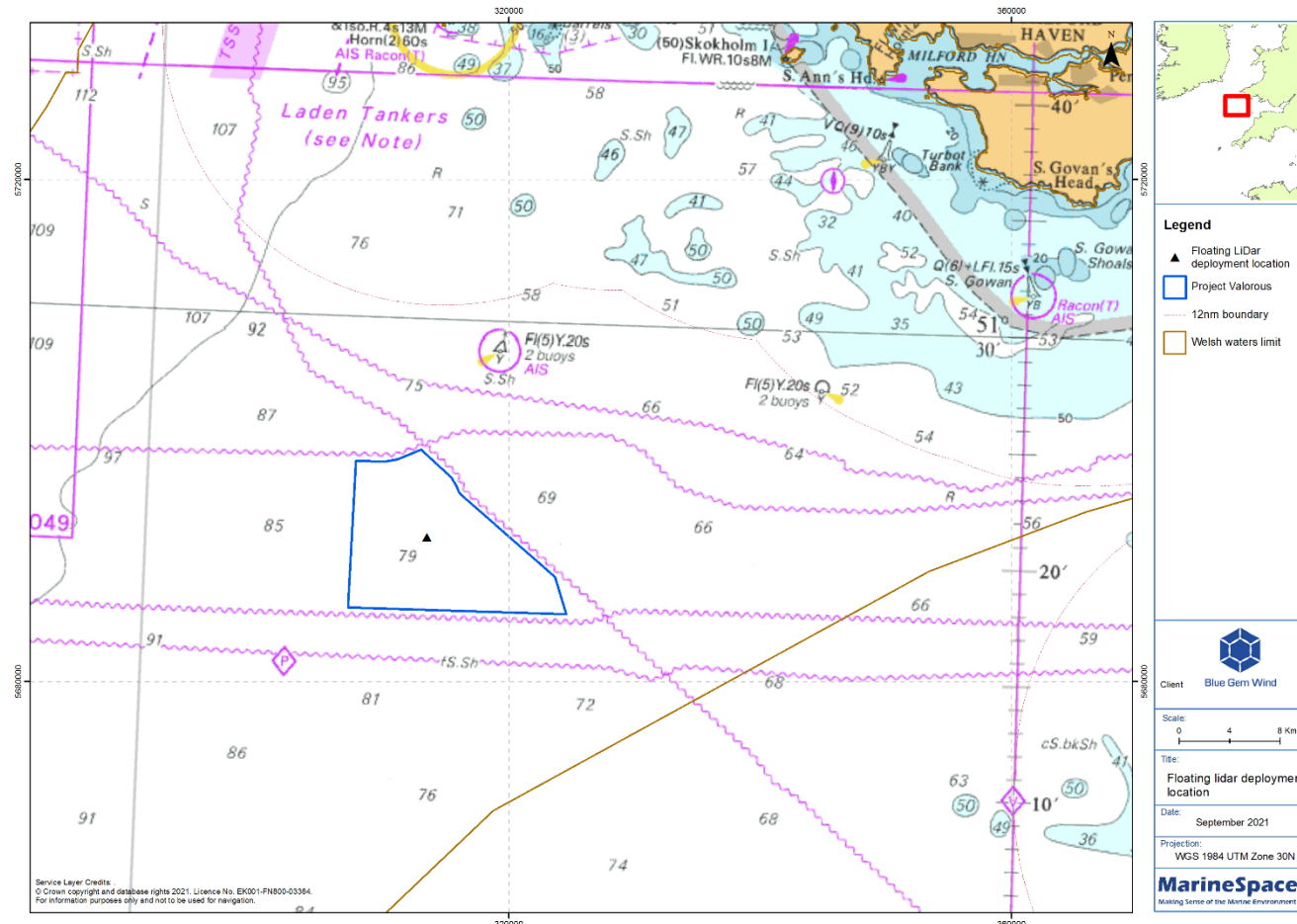


3 Safe Clearances, Navigation Safety Features and Safety Notes for Mariners

It is recommended that mariners remain vigilant of the capsized Floating LiDAR system and make note of its location.

All vessels are requested to maintain a safe distance (100m) from the Floating LiDAR system and recovery vessel when it is located within Milford Haven Port Authority (MHPA) limits, outside MHPA limits all vessels are requested to maintain a safe distance (500m) from the recovery vessel.

4 Chart of Floating LiDAR Location



5 Project Contact Details

Fisheries Liaison Officer: Jonny Lewis
Email: jonny.lewis@marinespace.co.uk
Telephone: 07817 644284

Fisheries Liaison Officer: Rhianna Roberts
Email: rhianna.roberts@marinespace.co.uk
Telephone: 07375 243358

Document title	Date	Author	Reviewed By	Status	Page 2 of 2
Blue Gem Wind NtM/001 v7.0	16-12-2021	BGW	OWC	FINAL	