



# Project Erebus Floating Offshore Wind Farm

## Notice to Mariners

<b>NtM Number</b>	Erebus/003 v15.0
<b>Date of Issue</b>	01/09/2021

### 1 Planned Activity

#### Recovery of the floating LiDAR

Recovery of the floating LiDAR, located at the location listed below, will take place between the 08/09/2021 and 11/09/2021.

There are currently 2 scenarios for the recovery operation. Which scenario is undertaken is based on the weather/sea conditions at the time of operation:

**Plan A:** The floating LiDAR will be towed to harbour (Milford). The full mooring and clump weight would be fully recovered.

**Plan B:** The floating LiDAR, including fulling mooring and clump weight, will be brought on board the vessel to sail to harbour (Milford).

The floating LiDAR has the following identifiable features:

- Yellow in colour
- Fl (5) Y 20s light (5 nm range)
- Yellow 'X' shaped topmark
- Flash rate not exceeding 30 per minute



#### Continued Deployment of Wave Buoy

The Wave Buoy will be continued to be deployed at the location below.

The Wave Buoy has the following identifiable features:

- Yellow in colour
- Fl (5) Y 20s light (2-3nm range)
- Flash rate not exceeding 30 per minute



#### Recovery of the Wave Buoy Mooring

As per Erebus/003 v15.0 (issued on the 31 August 2021) the damaged mooring from the original wave buoy location remains in the approximate location listed below.

An attempt to recover the damaged mooring will take place on the 02/09/2021 or 03/09/2021, if unable to recover due to weather, a second attempt will be carried out on the 12/09/2021.

A further NtM will be issued to confirm if the recovery has been successful.

A Remotely Operated Vehicle will be deployed to identify the mooring. The mooring will then be brought to deck and transported to shore.

**It is recommended that mariners continue to remain vigilant and make note of the approximate mooring location below.**

### 2 Geographic Co-ordinates (UTM 30 / WGS 84)

	Floating LiDAR Location		Wave Buoy Location		Wave Buoy Mooring (Approximate Location)	
<b>Easting Northings</b>	319293.94	5706371.55	319285.93	5706027.30	318094.17	5704520.31

Document title	Date	Author	Reviewed By	Status	Page 1 of 3	
Blue Gem Wind NtM/003 v15.0	01-09-2021	BGW		FINAL		



<b>Degrees Minutes Seconds</b>	51°28'46.53"N	5°36'8.62"W	51°28'35.40"N	05°36'08.40"W	51°27'45.29"N	5°37'7.32"W
<b>Decimal Degrees</b>	51.479594	-5.602394	51.476500	-5.602333	51.462581	-5.618700
<b>Degrees Decimal Minutes</b>	51° 28.775'N	5° 36.143'W	51°28.590'N	5° 36.140'W	51°27.755'N	5°37.122"W

### 3 Outline programme of works

#### Floating LiDAR Recovery

Estimated Potential Start Date: 08/09/2021

Estimated Potential Completion Date: 11/09/2021

#### Wave Buoy continued deployment Operations

Start: August 2020

End: October 2021

#### Wave Buoy Mooring Recovery

1<sup>st</sup> attempt: 02/09/2021

End: 03/09/2021

2<sup>nd</sup> attempt: 12/09/2021

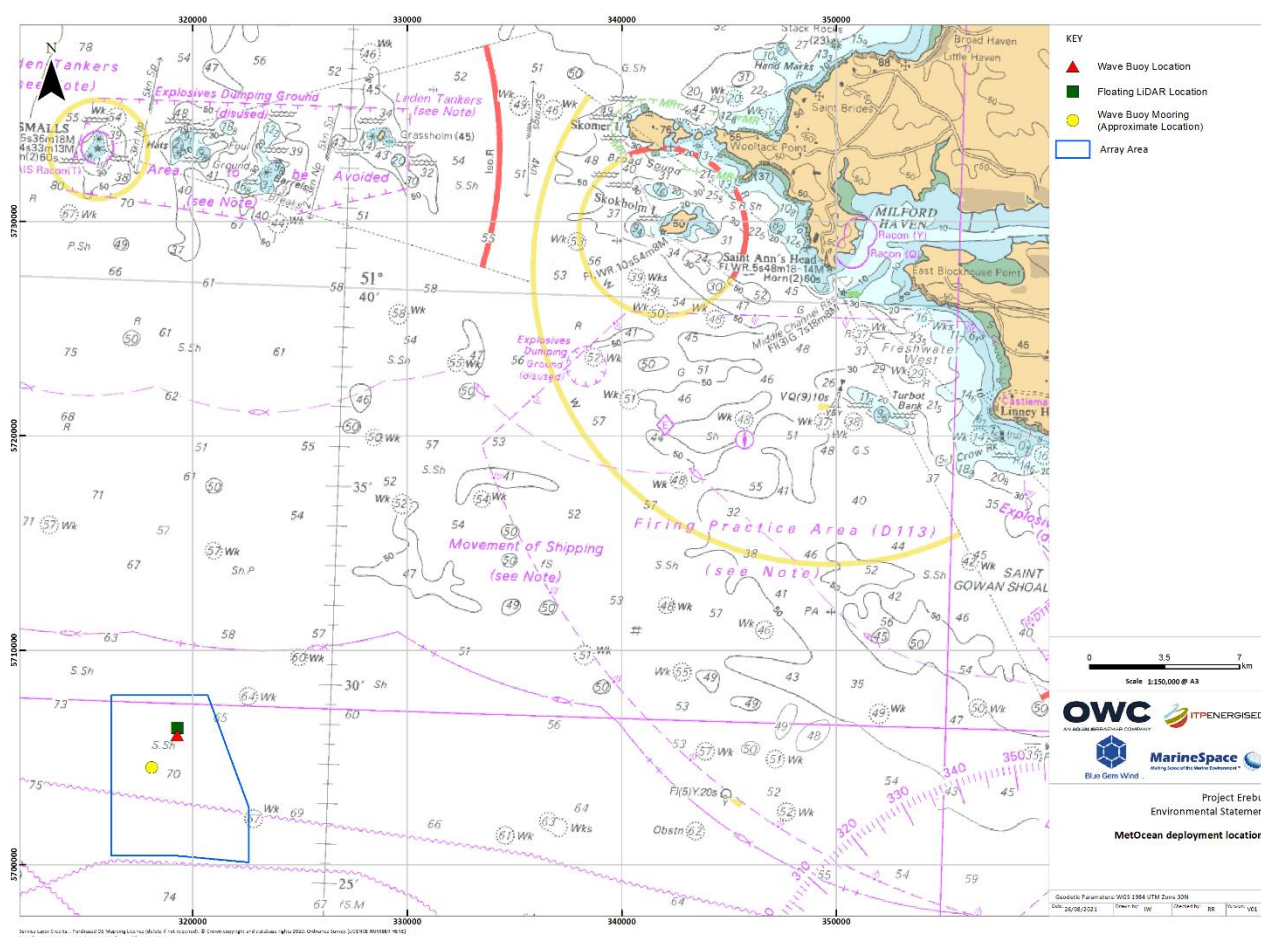
End: 12/09/2021

### 4 Safe Clearances, Navigation Safety Features and Safety Notes for Mariners

All vessels are requested to maintain a safe distance (100m) from the recovery vessel when it is located within Milford Haven Port Authority (MHPA) limits, outside MHPA limits all vessels are requested to maintain a safe distance (500m) from the recovery vessel.

It is recommended that mariners remain vigilant of the damaged wave buoy mooring and make note of the approximate mooring location.

### 5 Chart of locations



Document title	Date	Author	Reviewed By	Status	Page 2 of 3
Blue Gem Wind NtM/003 v15.0	01-09-2021	BGW		FINAL	





## 6 Vessel details

### Details of the vessel to be used for the Floating LiDAR recovery (Option A):

Vessel Name:	<i>Duke of Normandy</i>
Vessel Type / LOA(m):	Shallow draft anchor handling tug / 26
VHF Call Sign:	MHZS8
MMSI:	235026811
Vessel Bridge Mobile:	+44 07984733688
Vessel Sat Phone:	NA
Onshore Contact	+44 7700 710449



### Details of the vessel to be used for the Floating LiDAR recovery (Option B):

Vessel Name:	Willendeavour
Vessel Type / LOA(m):	Eurocarrier 2209 / 22
VHF Call Sign:	MMPC
MMSI:	235051664
Vessel Bridge Mobile:	+44 (0) 7801 477083
Vessel Sat Phone:	00 8816 3152 9788
Onshore Contact	+44 (0) 7812 036865



### Details of the vessel to be used for the mooring recovery:

Vessel Name:	<i>Severn sea</i>
Vessel Type / LOA(m):	Offshore tug, supply, buoy, and survey / 30.14
VHF Call Sign:	2DCG5
MMSI:	235077754
Vessel Bridge Mobile:	+44 (0)7741 009991
Vessel Sat Phone:	+870773402160
Onshore Contact	+44 (0)845 519 3123



## 7 Project Contact Details

Fisheries Liaison Officer: Jonny Lewis  
 Email: [jonny.lewis@marinespace.co.uk](mailto:jonny.lewis@marinespace.co.uk)  
 Telephone: 07817 644284

Fisheries Liaison Officer: Rhianna Roberts  
 Email: [rhianna.roberts@marinespace.co.uk](mailto:rhianna.roberts@marinespace.co.uk)  
 Telephone: 07375 243358